



Isotek®  
clean power **innovation**

Power  
**Evolved**



## EV03 Gemini 2-way

Your chance to enter IsoTek's innovative and multi award-winning range of power conditioning solutions. Gemini is a cost effective upgrade for all small two box audio or audio-visual system, delivering improved performance, protection and astonishing value for money. Its compact design allows easy placement. Gemini can also be used in combination with Genesis One sine wave generator to expand power output sockets.





## Socket options

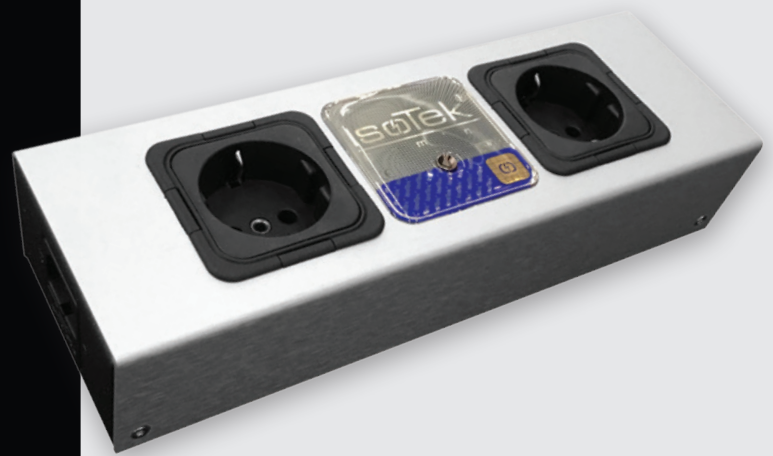
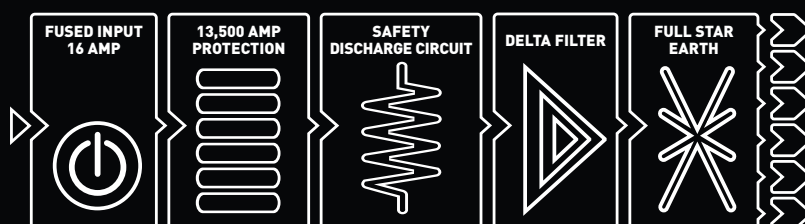


## Ideal to use with



Increase the single output socket of Genesis One with Gemini.

## Schematic block diagram



## Specifications

Removes Common Mode and Differential Mode mains noise.

Reduces RFI pollution by 30dB.

Independent outlets stop Differential Mode cross contamination.

Unique delta filter topology improves product performance.

KERP® (Kirchoff's Equal Resistance Path) ensures equal resistance and equal power delivery across all outlets.

13,500A of instantaneous protection, featuring IsoTek's unique sequential protection system.

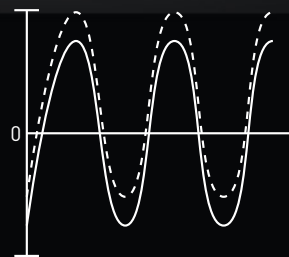
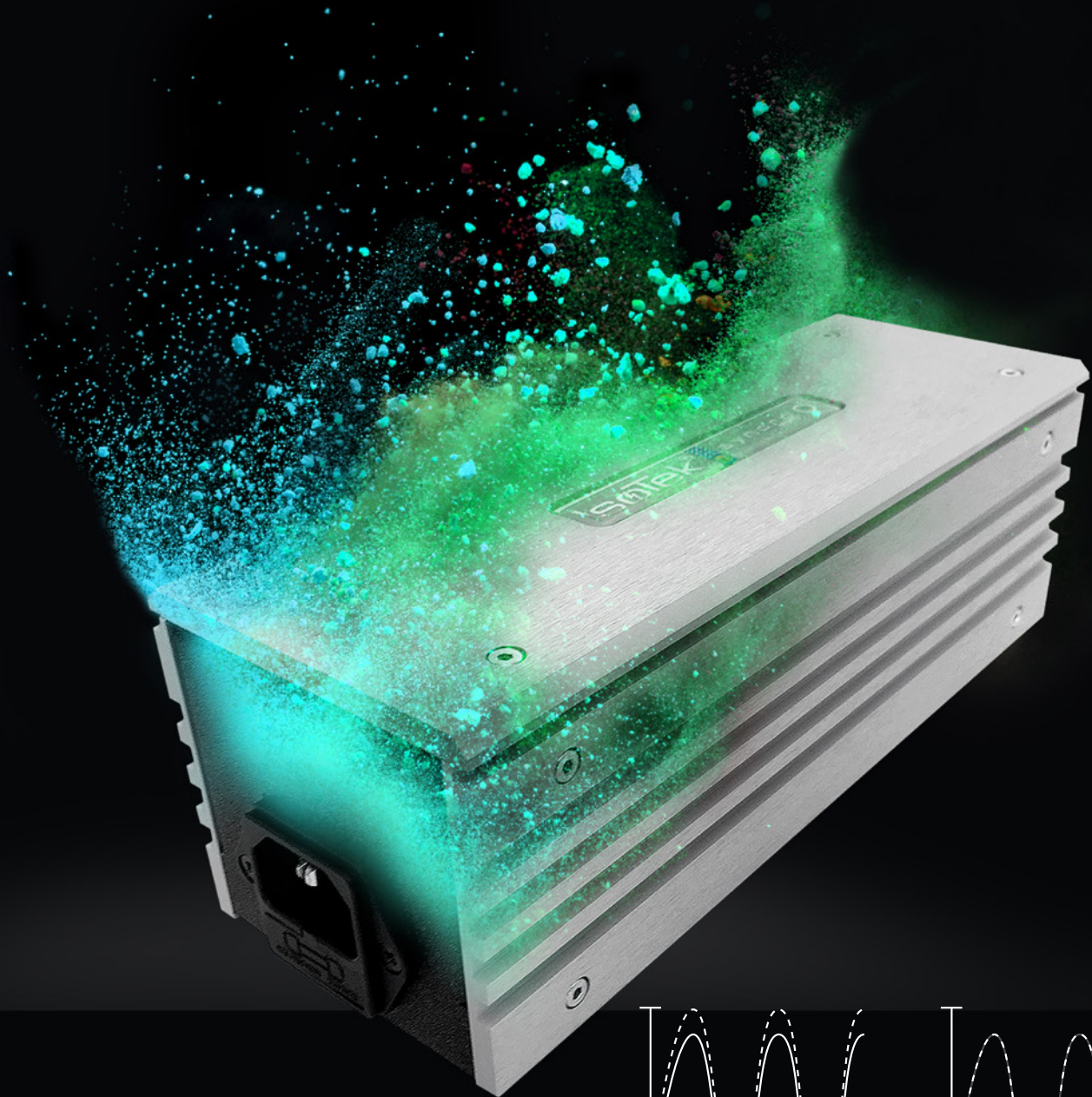
Internal wiring; multi-strand silver plated OFC copper with PTFE dielectric.

Available in UK, European, American, Australian and Swiss output sockets.

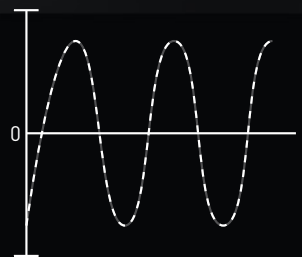
Maximum continuous power 2,300W.

# EV03 Syncro Uni

Syncro Uni incorporates unique DC-cancelling electronics that re-balance the mains sine wave on the zero volts line to dramatically reduce/silence transformer hum. This sophisticated product can be used independently to improve a single components performance, or in combination with another IsoTek power conditioner as an upgrade. Syncro Uni delivers a fully rebalanced sine wave.

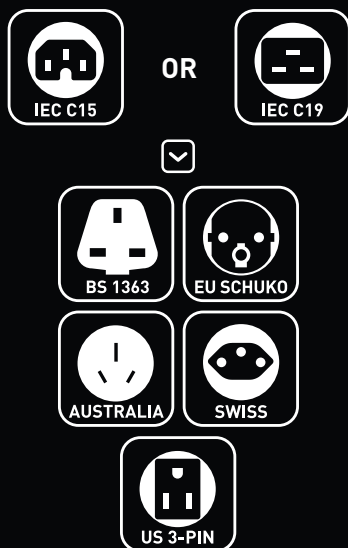


Mains sine wave off set  
(DC on the mains)



Corrected mains sine wave  
using Syncro power cable

## Socket options

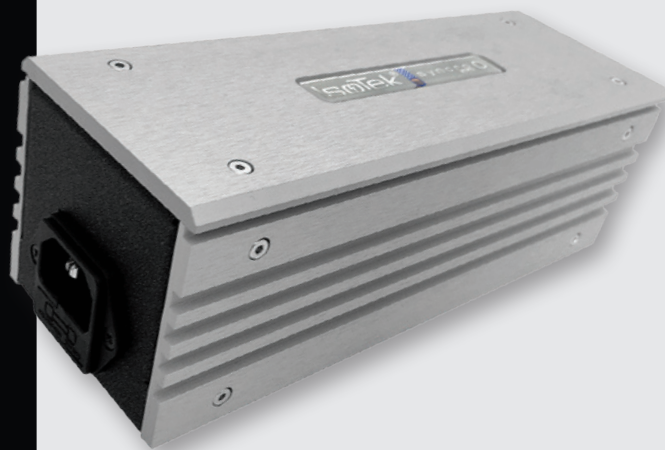
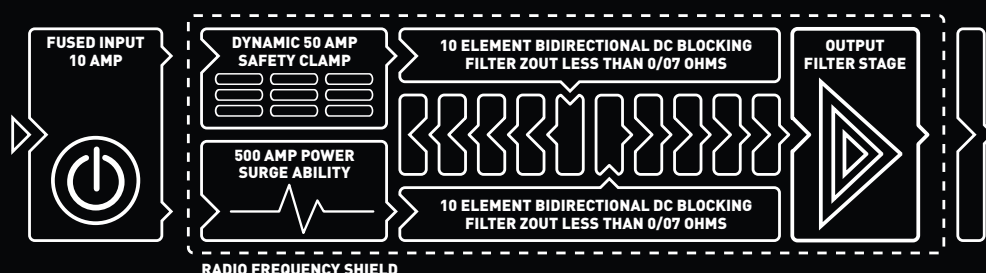


## Ideal to use with



Add Syncro Uni before the Aquarius or other IsoTek products to upgrade performance with DC cancellation across all output sockets.

## Schematic block diagram



## Specifications

Uniquely removes harmful DC by rebalancing the mains sine wave on the zero volts line.

Silver plated OCC (Ohno Continuous Cast) copper solid core internal wiring cable for improved power handling performance.

Virtual Air Dielectric using a Teflon FEP bridge, this offers chemically inert and very low dielectric constant over a wide frequency range.

16A or 10A rated versions to the following output sockets UK, European, American, Australian and Swiss output sockets.

Can be used with all ranges of power cables.

And ideal upgrade for all passive power cleaning solutions when used as a primary power input before the conditioner.



# EV03 Nova 12-way

The EV03 Nova is a state of the art passive power cleaning system incorporating full DC cancellation. The system offers 12 independently filtered power outlets, eight rated at 10A and four rated at 16A. The eight medium current outlets are perfect for source components and will auto adjust to the connected load to give the ideal clean power environment. The four high current outlets are designed for power amplifiers, active loudspeakers or sub woofers. These also feature a slightly paired down version of the Titan's unique Direct-Coupled® circuit which offers a virtually unlimited transient power reserve. Nova is a fully system solution, full system upgrade incorporating 12 independent filter networks, each supporting its own output socket.



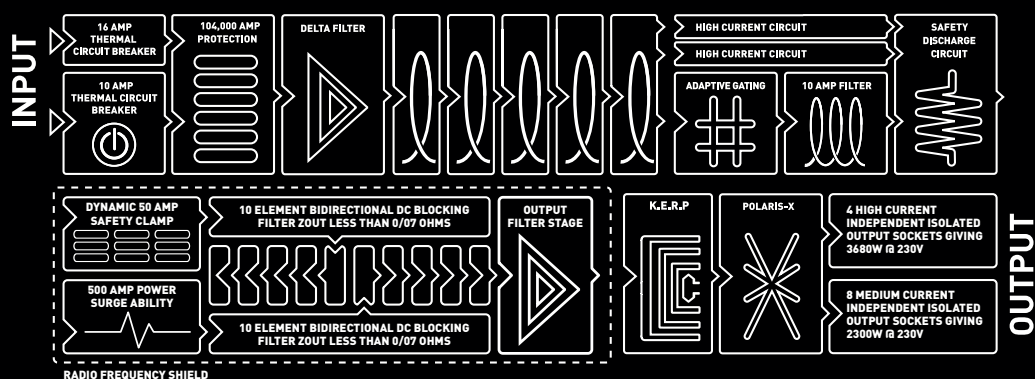
## Socket options



## Premier Power Cable Included



## Schematic block diagram



## Specifications

Removes both Common Mode and Differential Mode mains noise.

RFI reduction 75dB.

Twelve unique conditioning stages ensure optimal isolation between all outlets. Four high-current outlets incorporate part of Titan's Direct-Coupled® circuit. Eight outlets feature IsoTek's unique Adaptive Gating® circuit, which auto-senses the load.

Full sine wave re-balance and DC cancellation circuit.

LED Display showing voltage and THD distortion of the mains.

KERP® (Kirchoff's Equal Resistance Path) ensures equal resistance and equal power delivery across all outlets.

108,000A of instantaneous protection.

Internal wiring; solid core silver plated PCOCC with FEP virtually an air dielectric.

Four high-current outlets delivering 3,680W continuous. Eight medium-current outlets delivering 2,300W continuous.

Available in UK, European, American, Australian and Swiss output sockets.



© 2018 Audio Power Systems GmbH. All rights reserved.  
Unauthorised copy or reproduction of any part of this booklet is prohibited and subject to prosecution.

Information contained in this brochure is correct at the time of printing, product improvements will take place from time to time. Three-dimensional illustrations and cross sectional cut through images are for illustrative purposes only. Cable specifications may vary slightly to meet local certification standards.



@IsoTekSystems



/IsoTekSystems



/IsoTekSystems



isoteksystems.com