

Welcome

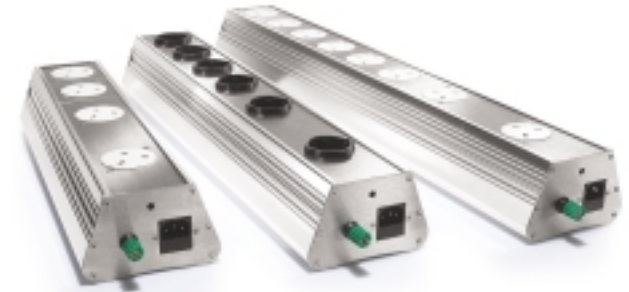
August 2004

Thank you for choosing an IsoTek product, please take a few moments to thoroughly read through this instruction manual to ensure you achieve maximum performance from your new IsoTek Gemini mains power filter and distribution system.

| | |
|-----------------------------------|--|
| Introduction | The company The principles The execution |
| Product & installation | Overview Set-Up Placement & safety |
| Troubleshooting | Fault finding |
| Specifications | Dimensions & sockets |

IsoTek

Gemini Instruction Manual



Extended Guarantee

Please copy and complete the form below to take advantage of our extended guarantee service.

| | |
|--|---|
| For our extended guarantee please complete & return with a copy of your invoice. This does not affect your statutory rights | |
| Date of purchase: _____ | IsoTek Please complete and forward to: IsoTek Systems 16 Gainsley Road Camberley Surrey GU15 1DH |
| Type of product purchased: _____ | |
| Product serial number: _____ | |
| YOUR DETAILS | |
| Full name: _____ | 25 Year Guarantee* <small>Year Independent</small> |
| Address: _____ | |
| _____ | |
| Post Code: _____ | |



IsoTek
www.isoteksystems.com



Introduction

The company IsoTek was formed in July 2001 with the vision to create high quality mains power distribution units that moved beyond current conventions. Through careful market analysis and extensive research we were able to launch products that moved power distribution forward to be recognised as an integral part of any audio or home theatre system. Our products continue to lead the way in their field, with our latest GII range pushing the boundaries of filter performance still further. The GII products galvanise our commitment to the pursuit of excellence at every level.

The principles We believe all products benefit from having their own clean power supply, therefore we advocate the concept of using (smaller) individual filters on each component, with these being specifically designed for their purpose. This dramatically reduces and stops component cross contamination and dispels the belief that one size fits all. Every single component used in our designs is extensively tested for quality and reliability. Our circuit designs are extensively 'field' tested before coming to market so we can guarantee the widest compatibility with third party products.

The execution Within the market of premium audio it is vital to offer exceptional performance and value for money. Products must be made to the highest of standards, be reliable and attractive. A manufacturer must offer exceptional service, dealer training, support, and undertake the very best in promotion design and literature. If all these elements are in place customers should experience at every stage. Our continual quest is to meet these challenges wisely.

All of our products are professionally designed, manufactured and hand built in the UK. Deep consideration is given to style, functionality, performance and value for money.

The product & installation

Overview Thank you for purchasing the Gemini mains power filter and distribution system. The unit you now hold has been designed specifically to work with the highest quality audio and audio visual components. This sophisticated unit eliminates product cross contamination through sophisticated shunt filters coupled with our proprietary gating system and 'Polaris-X' technology. Gemini features 1-8 high quality outlets rated at 2300 Watts, suitable for virtually all components. The compact design also offers easy 'plug-n-play' installation and can be safely used with all components.

Set-Up Position the Gemini so that the 'IsoTek' logo is facing you and readable. To the left of the unit on the edge is an earth post and IEC inlet, which takes the power from your wall socket. You should also notice an LED indicator light mounted toward the top centrally on this face. When the unit is connected to a mains power supply this light will illuminate giving indication that the Gemini is fully powered and functional. The top of the unit features 2, 4, 6 or 8 high quality unswitched outlets, dependent on which model you have. These accept any brand of mains cable. We do however strongly recommend a high quality shielded cable. Your equipment should be powered by these outlets.

Placement & safety Although the Gemini can be positioned in a number of environments we recommend that the unit be wall mounted using our dedicated bracket system. If this is not viable, then position the unit so that the LED indicator light is visible and the unit is not covered by cabling, soft furnishings or positioned near heat sources, such as radiators or air ducts. Do not let liquids spill onto the unit. If this should happen, immediately switch off the unit at the wall socket, wait for at least one minute, unplug all other cables and return the unit to your nearest authorised IsoTek dealer.

Troubleshooting

- Fault finding** The LED indicator is not illuminated and the unit gives no power.
- Check that the mains inlet fuse is intact. This will be located in the drawer of the IEC socket at the rear of the unit on the left hand side. If there is not a fuse located or you have used up your supply please contact your local stockist or email, support@isoteksystems.com so that we can forward you a free replacement.
 - Check that the mains cable is securely plugged into the unit and the wall socket.
 - Check the fuse within the plug is intact. On rare occasions the fuse at the main distribution fuse box may also need to be checked.

Specifications

The following information relates only to IsoTek GII Gemini. These are original products and should not be confused.

| | |
|---|---|
| Number of outlets: | 2, 4, 6 or 8 |
| Outlet type: | 13A high quality unswitched |
| Mains inlet: | IEC fused |
| Mains voltage: | 100-270VAC/50Hz-60Hz |
| Maximum current (outlets 1&2): | 10Amps HRC |
| Total Wattage: | 2300 Watt (230V Europe) 1100 Watt (110V USA) |
| Dimensions (W x H x D): | 120 x 80 x 265 / 410 / 555 / 700mm |
| Weight: | 2.75 - 5.0Kg |
| Warranty: | 1 year |
| Guarantee: | Extended service see below |

The information given in this document is correct at time of print. However, small production changes in the course of improvement through R&D may arise.